

REGIONAL SPECIALISED METEOROLOGICAL CENTRE-TROPICAL CYCLONES, NEW DELHI TROPICAL WEATHER OUTLOOK

DEMS-RSMC TROPICAL CYCLONES NEW DELHI DATED 30.12.2023

TROPICAL WEATHER OUTLOOK FOR NORTH INDIAN OCEAN (THE BAY OF BENGAL AND THE ARABIAN SEA) VALID FOR NEXT 168 HOURS ISSUED AT 0600 UTC OF 30.12.2023 BASED ON 0300 UTC OF 30.12.2023.

BAY OF BENGAL:

YESTERDAY'S CYCLONIC CIRCULATION OVER NORTHEAST BAY OF BENGAL & ADJOINING BANGLADESH AT 1.5 KM ABOVE MEAN SEA LEVEL PERSISTED OVER THE SAME REGION AT 0300UTC OF TODAY, THE 30TH DECEMBER.

SCATTERED LOW AND MEDIUM CLOUDS WITH EMBEDDED INTENSE TO VERY INTENSE CONVECTION LAY OVER EXTREME SOUTH BAY OF BENGAL ADJOINING EQUATORIAL INDIAN OCEAN AND SOUTH ANDAMAN SEA (MINIMUM CTT MINUS 85 DEG CEL). SCATTERED LOW AND MEDIUM CLOUDS WITH EMBEDDED ISOLATED WEAK TO MODERATE CONVECTION LAY OVER REST BAY OF BENGAL AND NORTH ANDAMAN SEA.

*PROBABILITY OF CYCLOGENESIS (FORMATION OF DEPRESSION) DURING NEXT 168 HRS:

24 HOURS	24-48 HOURS	48-72 HOURS	72-96 HOURS	96-120 HOURS	120-144 HOURS	144-168 HOURS
NIL	NIL	NIL	NIL	NIL	NIL	NIL

*NOTE: EVERY 24HR FORECAST IS VALID UPTO 0300 UTC (0830 IST) OF NEXT DAY

ARABIAN SEA:

UNDER THE INFLUENCE OF YESTERDAY'S UPPER-AIR CYCLONIC CIRCULATION OVER WEST EQUATORIAL INDIAN OCEAN & ADJOINING SOUTHEAST ARABIAN SEA, A LOW PRESSURE AREA FORMED OVER THE SAME REGION AT 0830 HOURS IST (0300UTC) OF TODAY, THE 30TH DECEMBER, 2023 AND ASSOCIATED UPPER-AIR CYCLONIC CIRCULATION IS EXTENDING UPTO MID-TROPOSPHERIC LEVELS. IT IS LIKELY TO MOVE WEST-NORTHWESTWARDS AND BECOME WELL MARKED LOW PRESSURE AREA OVER CENTRAL PARTS OF SOUTH ARABIAN SEA AND ADJOINING WEST EQUATORIAL INDIAN OCEAN DURING NEXT 48 HOURS

SCATTERED TO BROKEN LOW AND MEDIUM CLOUDS WITH EMBEDDED INTENSE TO VERY INTENSE CONVECTION LAY OVER SOUTH ARABIAN SEA ADJOINING EQUATORIAL INDIAN OCEAN (MINIMUM CTT MINUS 93 DEG CEL). SCATTERED LOW AND MEDIUM CLOUDS WITH EMBEDDED MODERATE TO INTENSE CONVECTION LAY OVER LAKSHADWEEP ISLANDS AREA MALDIVES AND COMORIN AREA.

*PROBABILITY OF CYCLOGENESIS (FORMATION OF DEPRESSION) DURING NEXT 168 HRS:

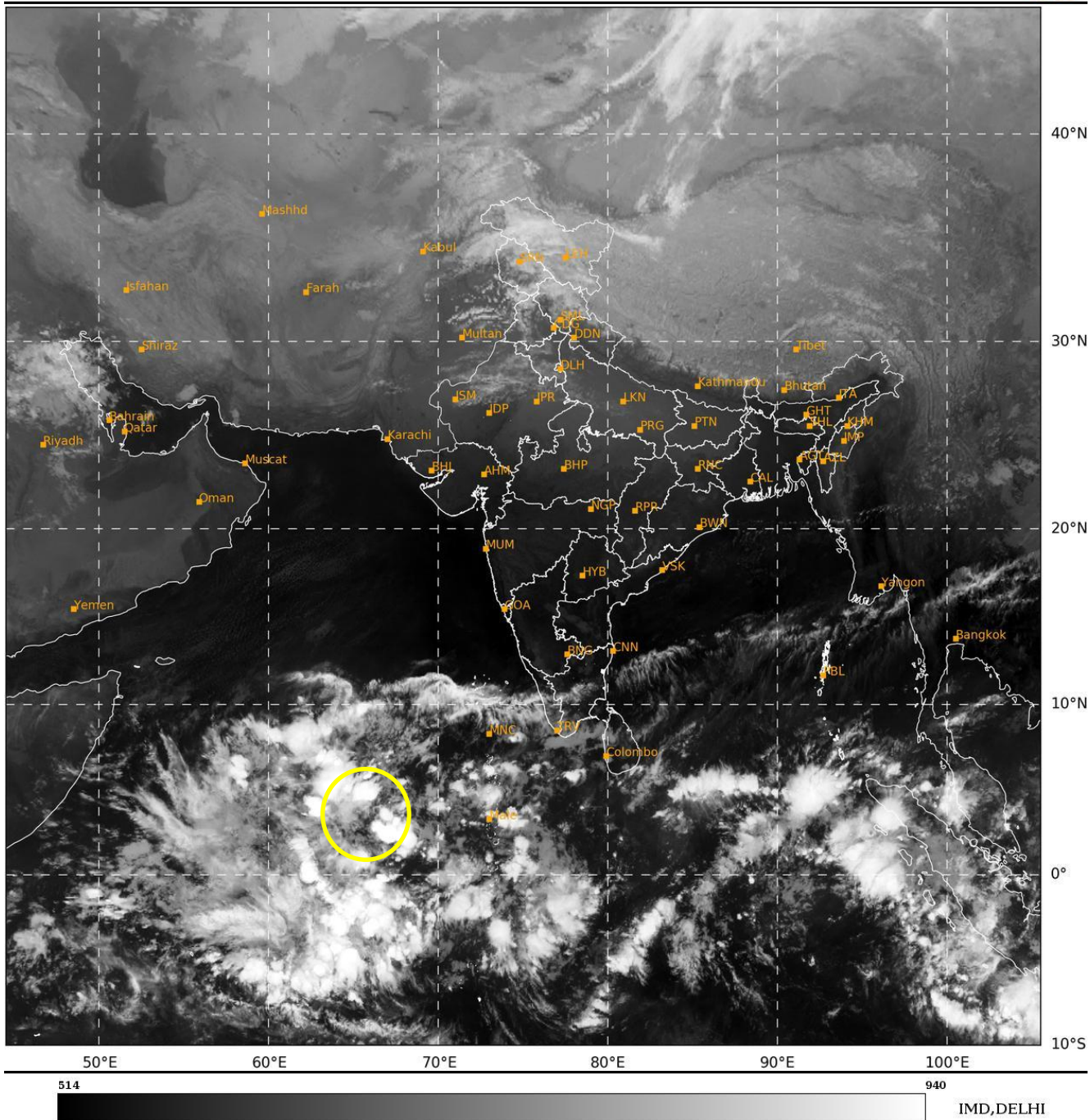
24 HOURS	24-48 HOURS	48-72 HOURS	72-96 HOURS	96-120 HOURS	120-144 HOURS	144-168 HOURS
NIL	LOW	LOW	NIL	NIL	NIL	NIL

Cloud distribution: (a) Isolated: <25%, Scattered:25-50%, Broken: 51-75%, Solid:>75%, Convection Intensity: (a) Weak: Cloud Top Temperature (CTT) >-25°C, (b) Moderate: CTT: - 25°C to -40°C, (c) Intense: CTT: - 41°C to -70°C and (d) Very Intense: : Less than -70°C
PROBABILITY OF CYCLOGENESIS (FORMATION OF DEPRESSION):NIL: 0%, LOW: 1-33%, , MODERATE: 34-66% AND HIGH: 67-100%
This is a guidance Bulletin for WMO/ESCAP Panel Member countries. Visit respective National websites for Country specific Bulletins

***NOTE: EVERY 24HR FORECAST IS VALID UPTO 0300 UTC (0830 IST) OF NEXT DAY**

SAT : INSAT-3D IMG
IMG_TIR1 10.8 um
L1C Mercator

30-12-2023/(0300 to 0327) GMT
30-12-2023/(0830 to 0857) IST



Cloud distribution: (a) Isolated: <25%, Scattered:25-50%, Broken: 51-75%, Solid:>75%, Convection Intensity: (a) Weak: Cloud Top Temperature (CTT) >-25°C, (b) Moderate: CTT: - 25°C to -40°C, (c) Intense: CTT: - 41°C to -70°C and (d) Very Intense: : Less than -70°C
PROBABILITY OF CYCLOGENESIS (FORMATION OF DEPRESSION):NIL: 0%, LOW: 1-33%, , MODERATE: 34-66% AND HIGH: 67-100%
This is a guidance Bulletin for WMO/ESCAP Panel Member countries. Visit respective National websites for Country specific Bulletins